

# GARDENVIEW MEDICAL CENTRE

COMMITTED TO CARE,  
BUILT FOR EXCELLENCE



211 Pietermaritz Street,  
Pietermaritzburg



# Mission & Vision

## MISSION

At GardenView, our mission is to deliver a world-class healthcare environment that is modern, accessible, and fully equipped to support the highest standards of patient care. We aim to empower medical professionals with the infrastructure and services they need to operate efficiently while ensuring that patients receive seamless, quality care under one roof.

## VISION

Our vision is to become Pietermaritzburg's premier integrated healthcare hub — a space where excellence in service, innovation in care delivery, and collaboration among healthcare providers come together to create a healthier, more connected community.



# WELCOME TO GARDEN VIEW

A modern, purpose-built medical centre in Pietermaritzburg designed to bring together healthcare professionals and business owners in a single, accessible hub.

At Garden View, we've created more than just a building we've built an ecosystem. As a service provider in the health or wellness space, you'll benefit from shared foot traffic, quality infrastructure, and a collaborative environment that helps your business grow.

## WHY JOIN THE GARDEN VIEW COMMUNITY?

### PRIME LOCATION

Easily accessible to patients, clients, and staff, with major transport routes nearby.

### BUILT-IN FOOT TRAFFIC

Enjoy exposure from specialist doctors, general practitioners, and other medical professionals already based here.

## MODERN, FLEXIBLE

Our spaces are designed to accommodate a variety of service types from pharmacies to health food retailers.

## SECURE & SUPPORTED

The centre offers 24/7 security, backup power, and managed maintenance so you can focus on your business.

## HEALTH-FIRST ECOSYSTEM

Align your services with a centre dedicated to wellness, medical care, and community impact.

# WHO SHOULD JOIN US?

We are welcoming service providers who complement the healthcare space, including:

- Retail Pharmacies
- Wellness Practitioners
- Health Food or Supplement Stores
- Medical Billing & Admin Support
- Optical Services
- Health & Beauty Clinics
- Health-Focused Cafés & Juice Bars
- Physiotherapists & Occupational Therapists
- And Others.

# Our Facilities

## Ground Floor – Support Services

Radiology | Pathology | Dialysis Unit | Retail Pharmacy.

## First Floor – Medical Suites

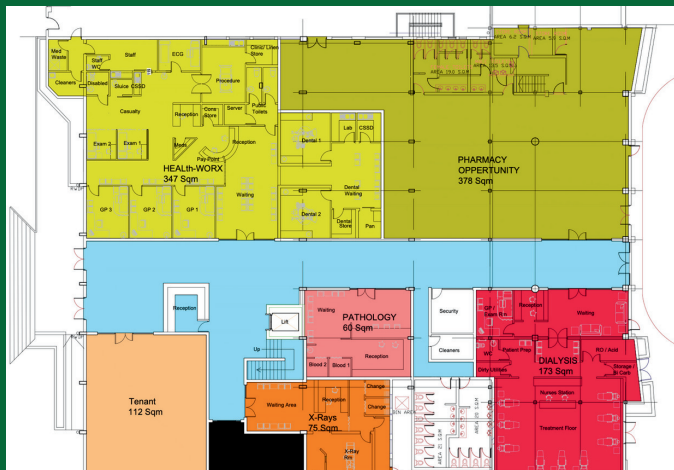
11 fully serviced consulting rooms for general and specialist practitioners.

Includes: General Surgery, Orthopedics, Internal Medicine, ENT, Dermatology, Pediatrics, and more.

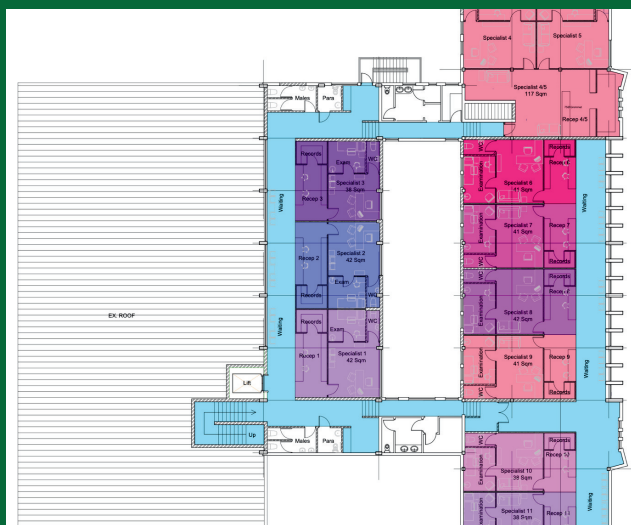
## Second Floor – 25 Bed Clinic (Coming Soon)

Day Clinic with Operating Theatres for minor procedures.

Ground Floor View



First Floor View



# READY TO GROW WITH US?

Don't miss the opportunity to place your business in a high-demand, high-visibility location designed for long-term success.

## CONTACT

Vuyisa Xilongo

Investment Associate

Phone: +27 (0) 66 512 0224

Email: [vuyisa@rhmanagers.co.za](mailto:vuyisa@rhmanagers.co.za)

