

# GARDENVIEW MEDICAL CENTRE

COMMITTED TO CARE,  
BUILT FOR EXCELLENCE



211 Pietermaritz Street,  
Pietermaritzburg



# Mission & Vision

## MISSION

At GardenView, our mission is to deliver a world-class healthcare environment that is modern, accessible, and fully equipped to support the highest standards of patient care. We aim to empower medical professionals with the infrastructure and services they need to operate efficiently while ensuring that patients receive seamless, quality care under one roof.

## VISION

Our vision is to become Pietermaritzburg's premier integrated healthcare hub — a space where excellence in service, innovation in care delivery, and collaboration among healthcare providers come together to create a healthier, more connected community.

# Gardenview Medical Centre

A fully managed, state-of-the-art facility designed for healthcare professionals who want to focus on patient care while we handle everything else.

# Why Partner With Us?

## DEVELOPED BY RH MANAGERS

RH Managers brings proven experience, having completed 35 private hospitals and 17 operational primary healthcare centres, supporting over 70 medical professionals across the country. The centre is backed by RH Bophelo Ltd, a listed investment company focused on sustainable healthcare.

## CONNECTED THROUGH HEALTHWORX

As part of the Healthworx network, specialists benefit from a broader patient referral system and integrated care pathways that link GPs to specialists. This structure supports continuity of care and helps grow your patient base.

## PRACTICE MANAGEMENT MADE EASY

Our full-service model simplifies practice management. From staffing and billing to admin, suite maintenance, marketing, and security. We handle the day-to-day operations so you can focus on your patients.

## ROOM TO GROW

We offer flexibility and room to expand. A sliding-scale revenue share model allows your practice to grow at your pace. We're also adding a 25-bed day hospital that will be launched soon, Expanding procedure capacity for increased revenue and greater patient impact.

# Our Facilities

## Ground Floor – Support Services

Radiology | Pathology | Dialysis Unit | Retail Pharmacy.

## First Floor – Medical Suites

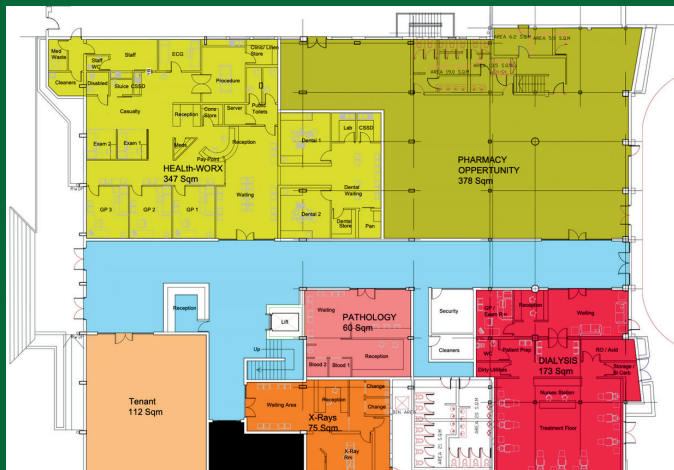
11 fully serviced consulting rooms for general and specialist practitioners.

Includes: General Surgery, Orthopedics, Internal Medicine, ENT, Dermatology, Pediatrics, and more.

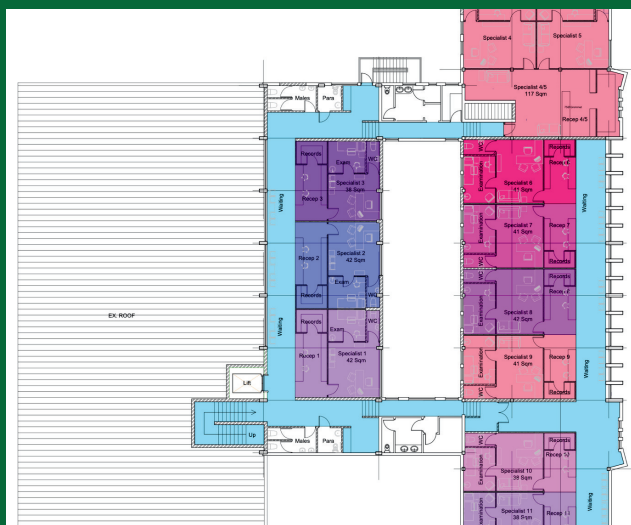
## Second Floor – 25 Bed Clinic (Coming Soon)

Day Clinic with Operating Theatres for minor procedures.

Ground Floor View



First Floor View



# Interested in Joining Gardenview?

## CONTACT

Vuyisa Xilongo

Investment Associate

Phone: +27 (0) 66 512 0224

Email: [vuyisa@rhmanagers.co.za](mailto:vuyisa@rhmanagers.co.za)

